

Name _____

Math 7, Period 1, 2, 3, 4, 5, 6, 7, or 9

_____ Problems Wrong

_____ Points Missed

_____ Grade

Integer Word Problems

Be sure to box your answers!

1) A submarine was situated 800 feet below sea level. If it ascends 250 feet, what is its new position?



2) In the Sahara Desert one day it was 136°F . In the Gobi Desert a temperature of -4°F was recorded. Find the difference between these two temperatures.

3) Tasha finished the first draft of her history essay. The teacher said it had to be at least six hundred words long. She counted the words in her draft and found she had 369. How many more words does she need to meet the minimum word count for the assignment?

4) Tyler and Christina are playing a game in which each player either wins, loses, or draws (ties) at each turn. The winner of a turn is awarded 5 points, and the loser loses 5 points. If it is a draw, 0 points are awarded. For the first eight rounds Tyler had the following results: lose, win, lose, win, win, lose, win, draw. What was Christina's point total for the rounds?

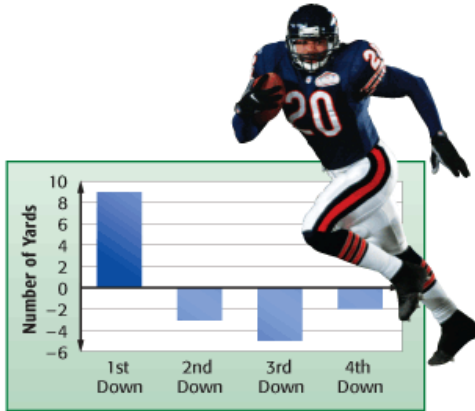
5) During an electronics experiment in your laboratory, you measure the voltage at terminal A on your newly designed circuit. You measure -12 volts. You check the same terminal after making a small change to the circuit and this time you measure -18 volts. What was the voltage difference between the two readings?

6) Jill has \$6 in her purse. She earns \$5 by selling candy, she spends \$10 on flowers, earns \$4 by selling cookies, then spends \$3 on ice cream. How many dollars does she have now?



7) A submarine was situated 700 feet below sea level. If it ascends 200 feet, what is its new position?

8) The graph shows the number of yards the Bears gained or lost on the first four downs. A value of -3 represents a 3-yard loss. What was the total yardage gained or lost from these four plays?



9) Cindy had a balance of \$345.28 in her checking account. During the week, she wrote checks for \$65.08 and \$24.50. She then made a deposit of \$56.00. What was her balance after the deposit?

10) A cross country skier made the following changes in altitude during a 5-hour period: up 28 meters, down 124 meters, down 40 meters, up 75 meters, and down 225 meters. What was the skier's net change in altitude?

11) At its first stop, a bus picked up 17 people. At the next stop, 12 people got on and 7 got off. At the third stop, 21 people got on the bus and 13 got off. How many passengers were on the bus at the end of all these stops?



12) The temperature at 8am was 61° , and by 3pm had risen to 88° . What is the difference between the temperature at 8am and 3pm?

13) The lowest temperatures in Alaska, Florida, Hawaii, and Montana are listed in the table. What is the difference in temperature between Montana and Hawaii?

State	Record Low Temperature (°F)
Alaska	-80
Florida	-2
Hawaii	12
Montana	-70

Source: *The World Almanac and Book of Facts*

14) Which statement is NOT always true?

- A. positive - positive = positive
- B. positive + positive = positive
- C. negative + negative = negative
- D. positive - negative = positive

Use the table below to answer #15-17.

State	California	Georgia	Louisiana	New Mexico	Texas
Lowest Elevation (ft)	-282	0	-8	2,842	0
Highest Elevation (ft)	14,494	4,784	535	13,161	8,749

15) Find the difference between the highest elevation in Georgia and the lowest elevation in California.

16) What would the combined heights be for the lowest elevation in New Mexico and the highest elevation in Texas?

17) What is the difference between the lowest elevations in Texas and Louisiana?